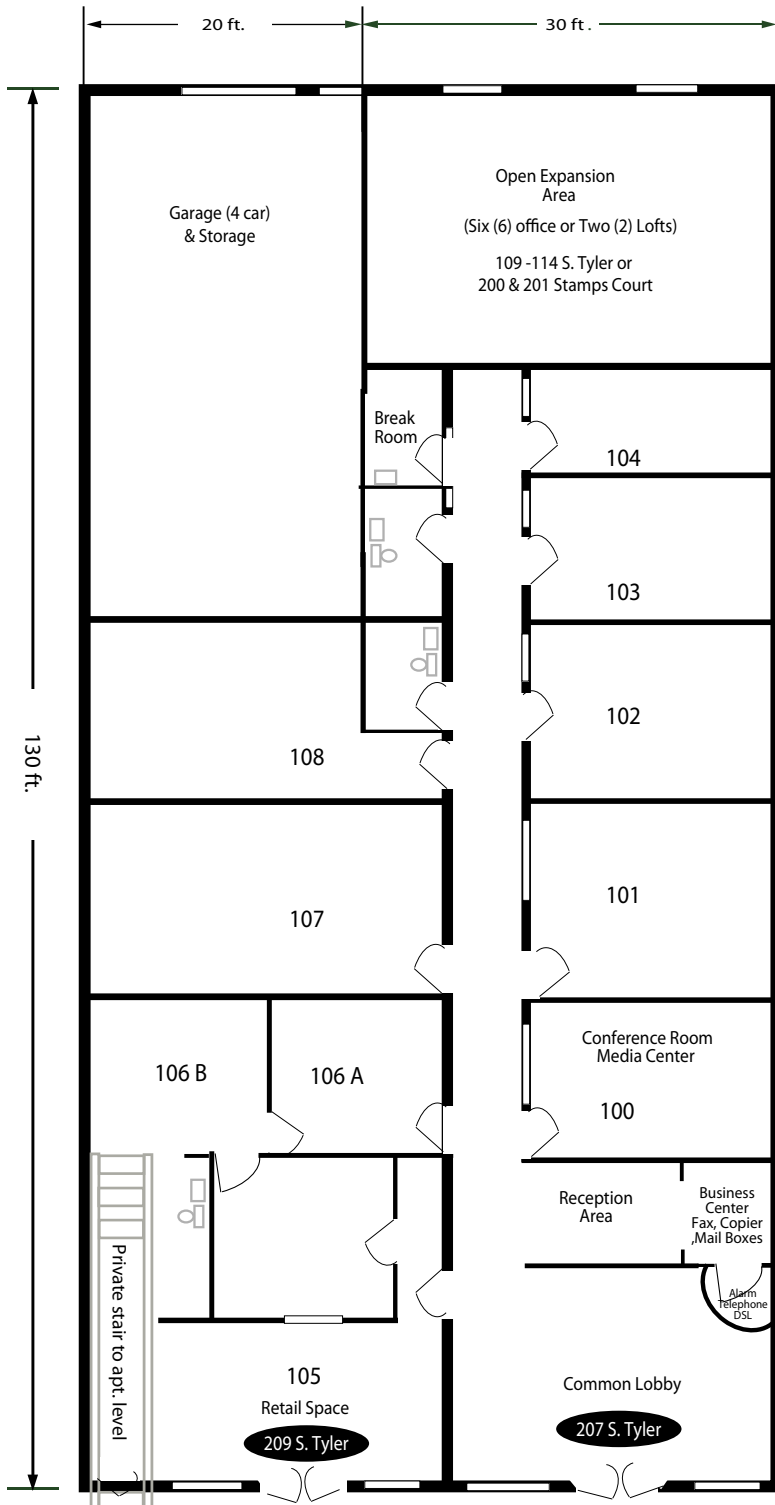


# The STAMPS BUILDING

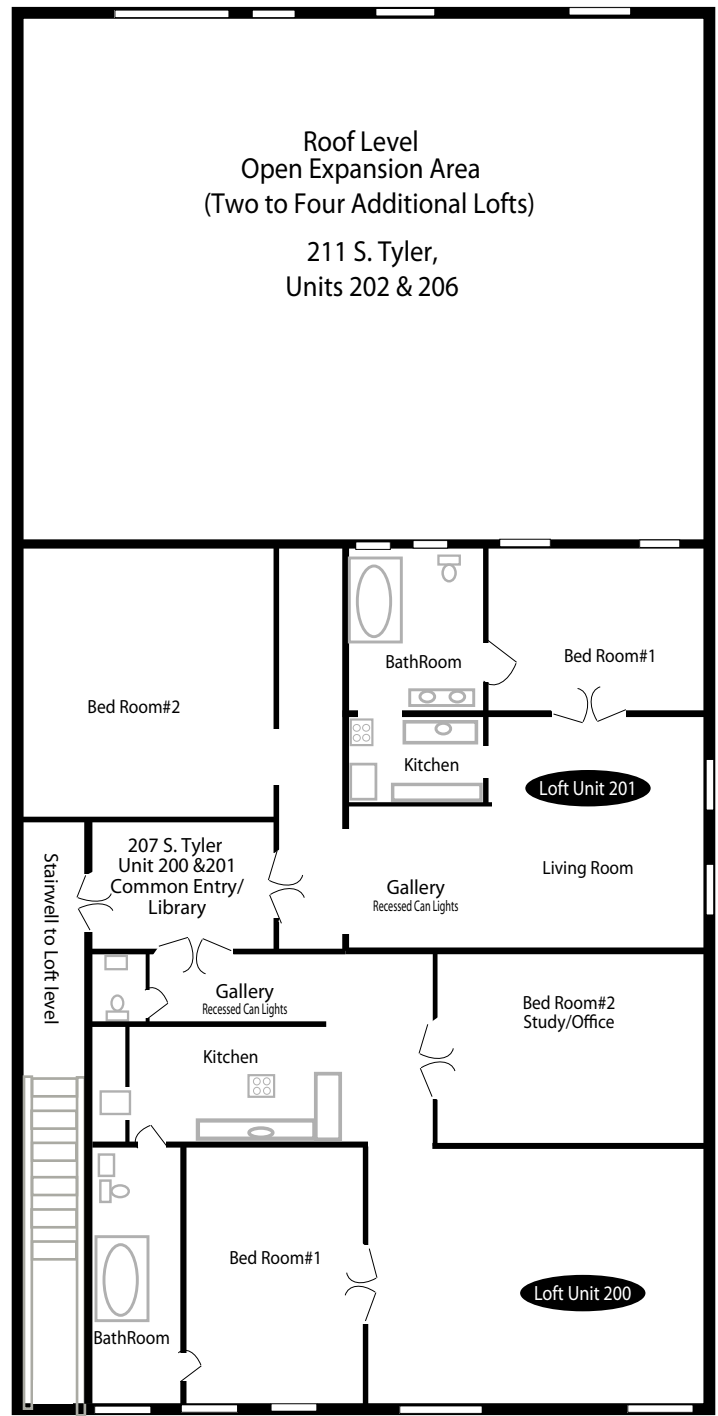
Ron Robertson (877) 315-8055  
 Stamps Building, LLC  
 www.stampsbuilding.com

## FLOORPLAN

March. 01, 2006: NOTE  
 Dimensions and areas  
 are approximate.



**Level 1 (207 - 209 S. Tyler St.)**  
 Approx 6,500 SF Divisible,  
 including common area



**Level 2 (211 S. Tyler St.)**  
 Approx 4,100 SF Divisible,  
 including common area